

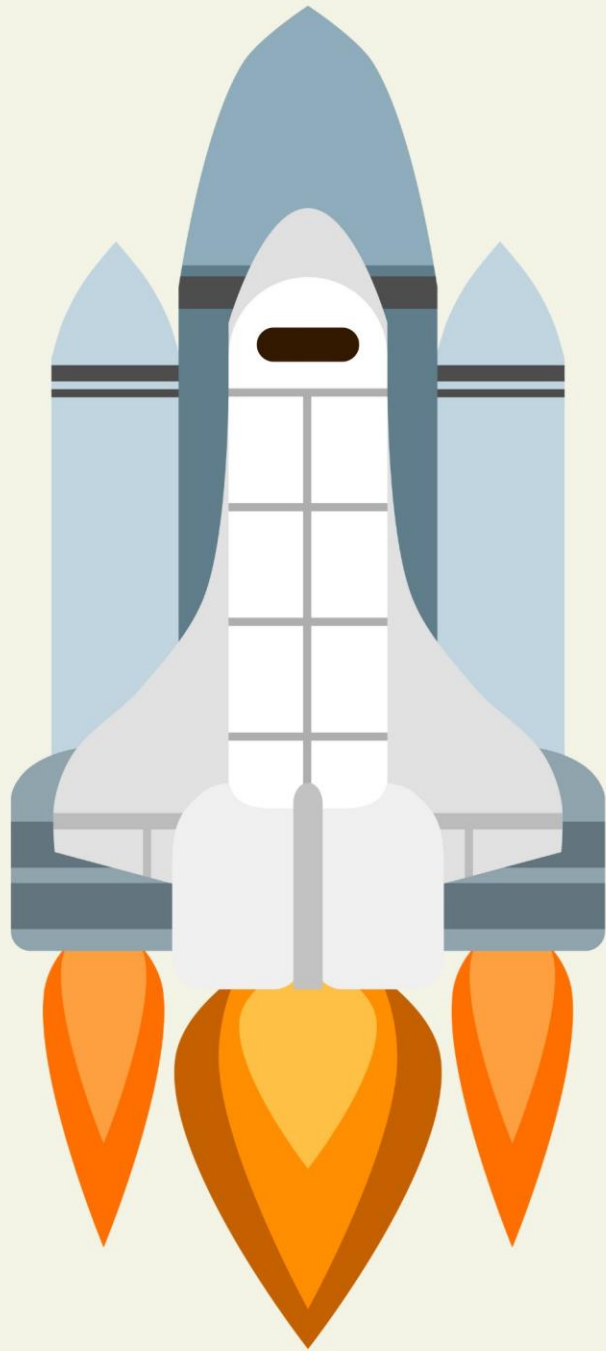


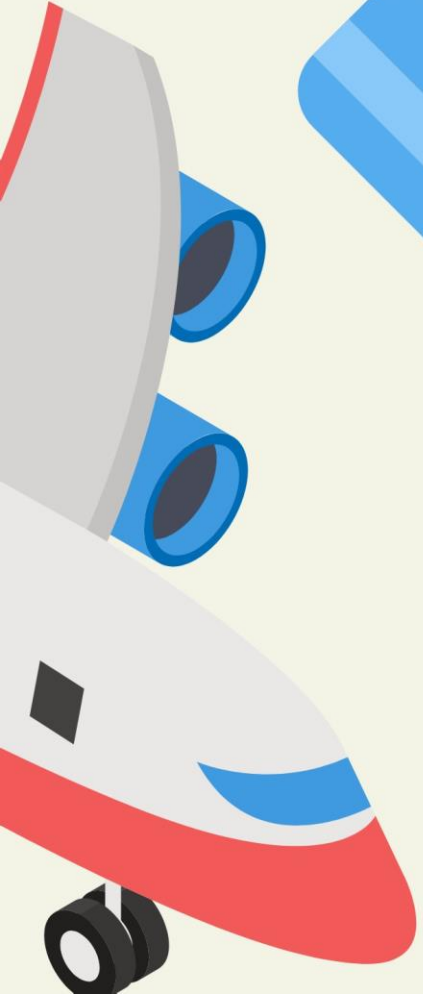
BİLİNÇLİ TEKNOLOJİ KULLANIMI

OKUL ÖNCESİ MODÜLER PANO

1. Modüler pano 16 adet yatay A4 kağıttan oluşmaktadır.
2. 4 adet sütun (yukarıdan aşağıya), 4 adet satır (soldan sağa) olacak şekilde tasarlanmıştır.
3. Modüler pano sayfalarını renkli olarak yazdırmak hedef kitlenin gelişim özellikleri için daha uygundur.
4. Çalışmaya başlamadan önce görselleri asacağınız panoyu belirleyin.
5. Parçaları ilk görselde resmedildiği gibi belirlediğiniz panoda birleştirin.

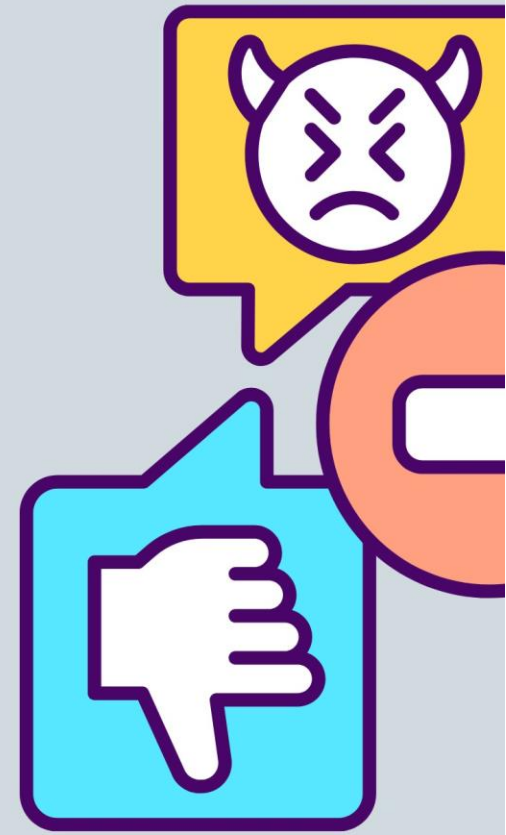
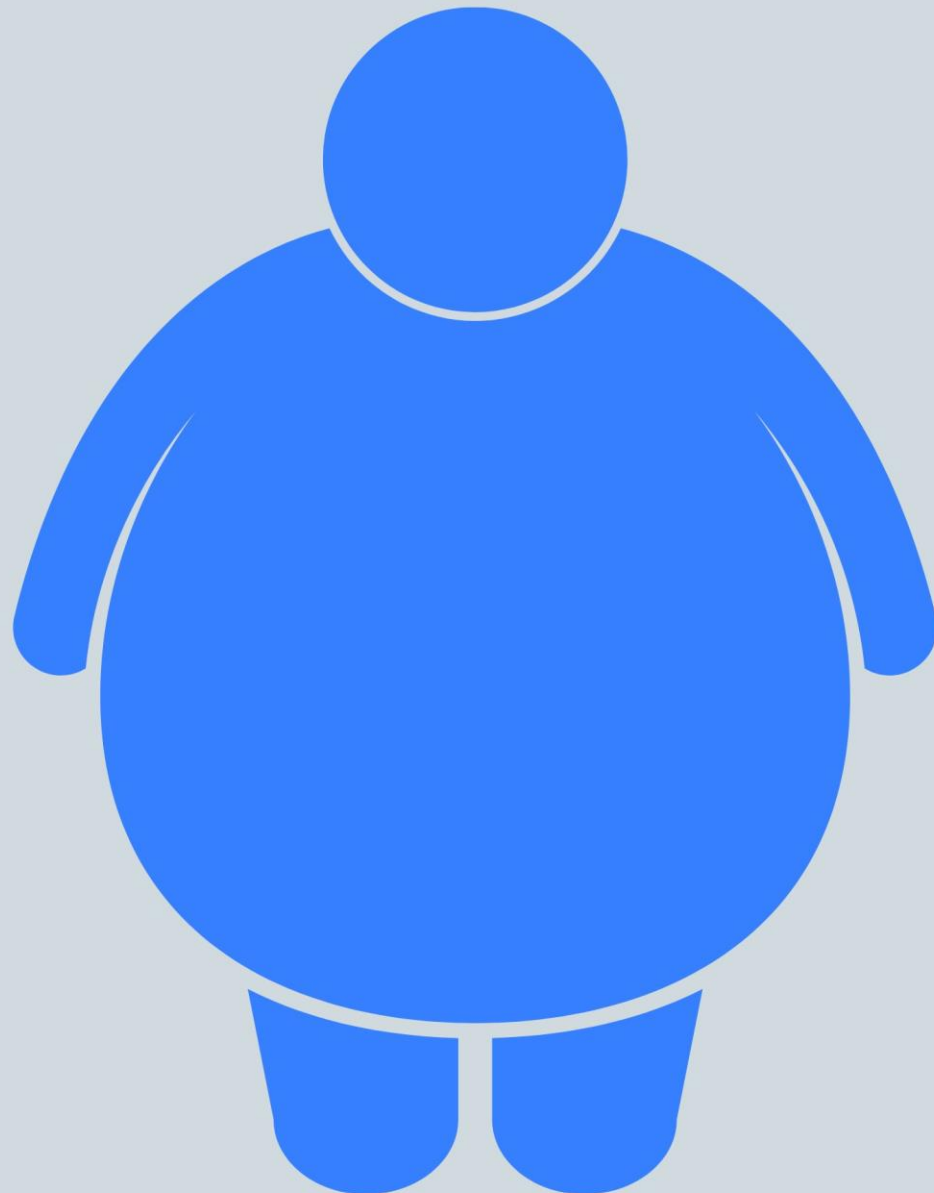




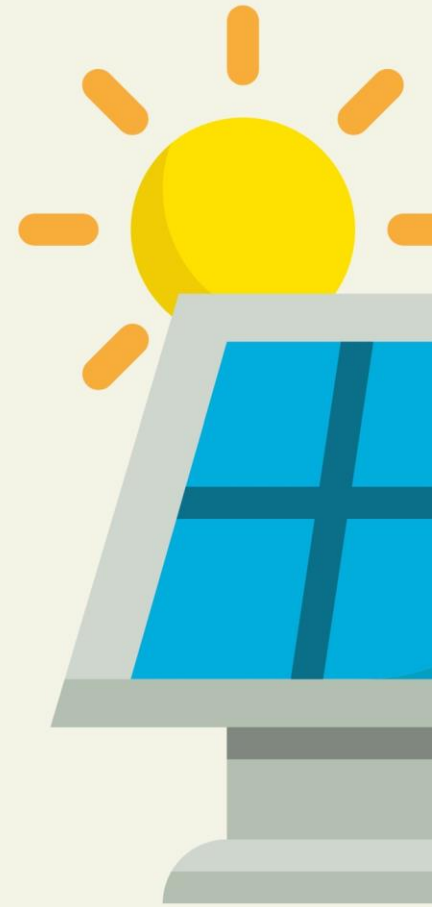
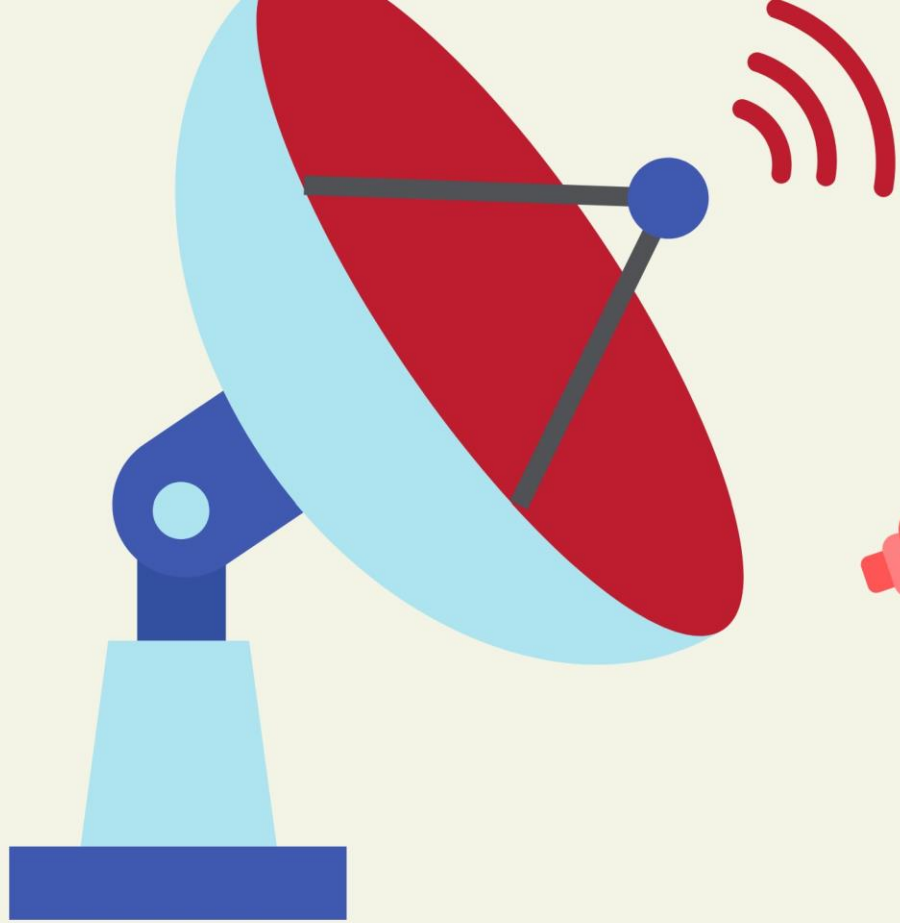


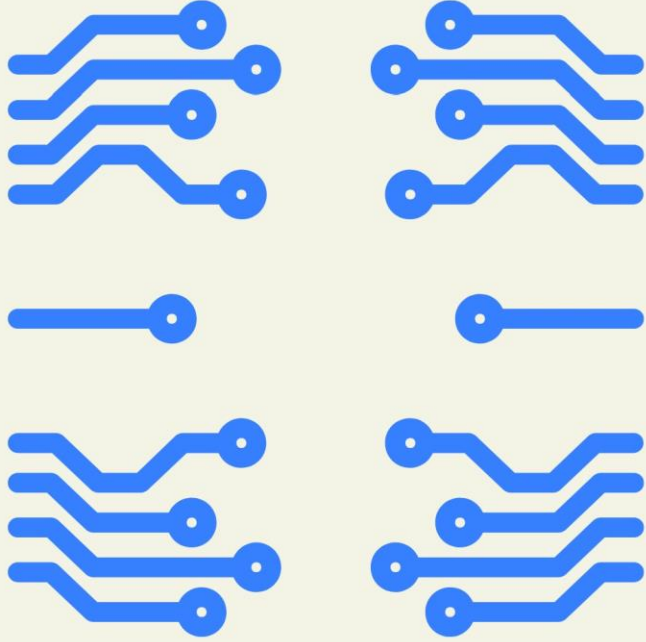
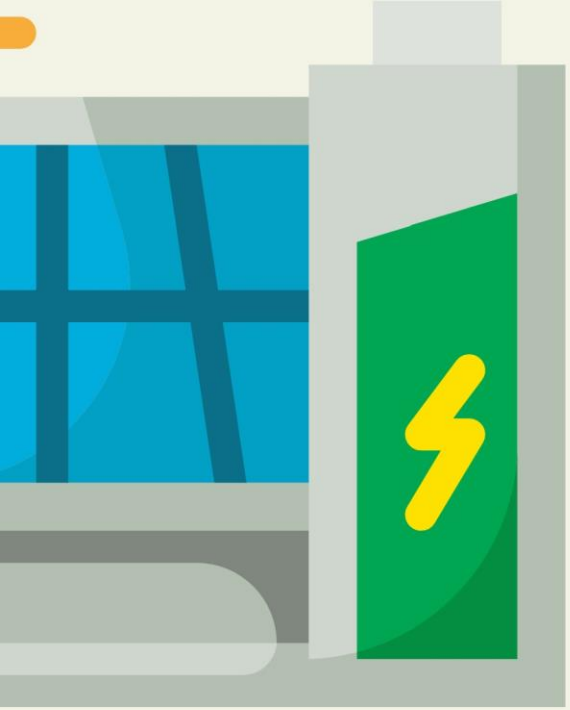


But
it's

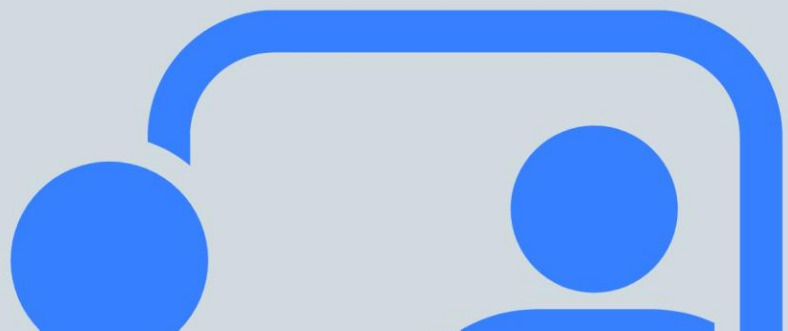
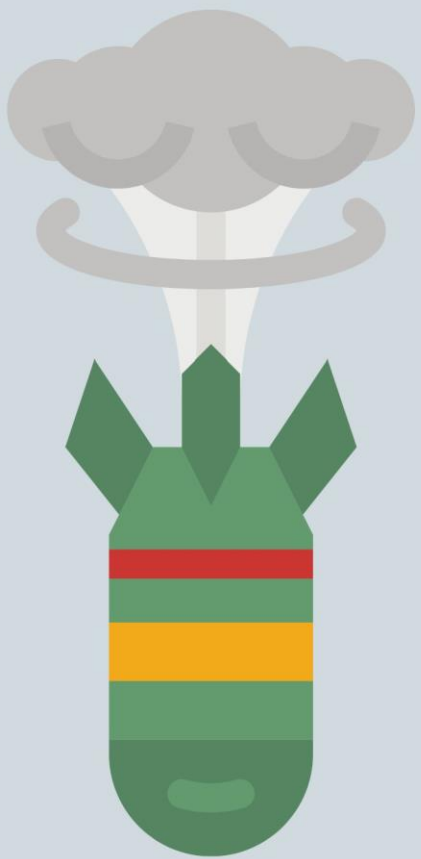


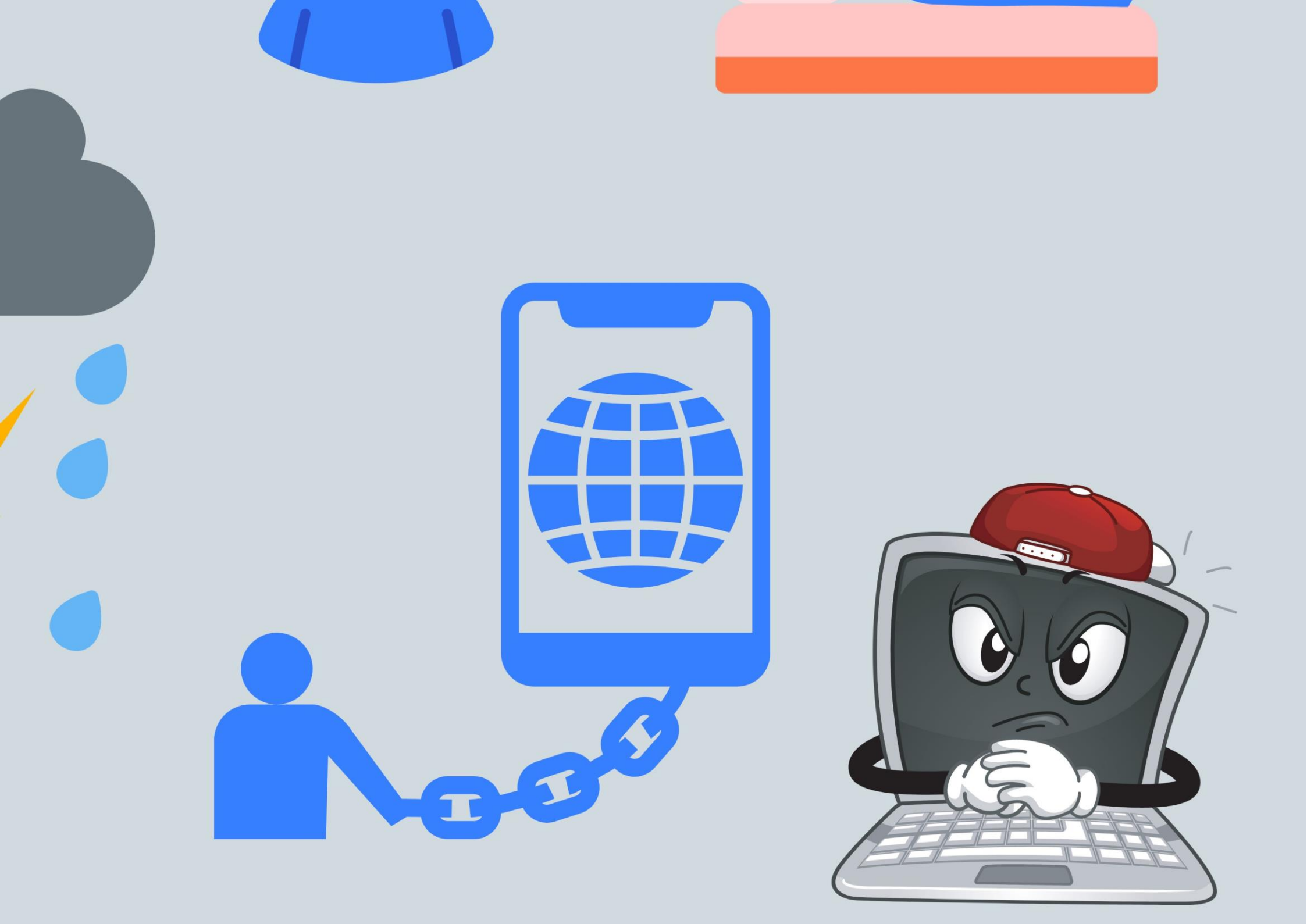


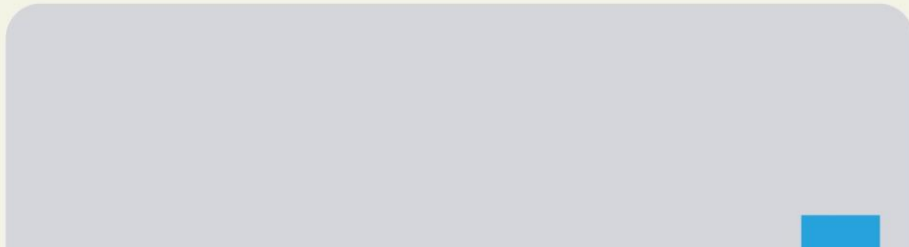
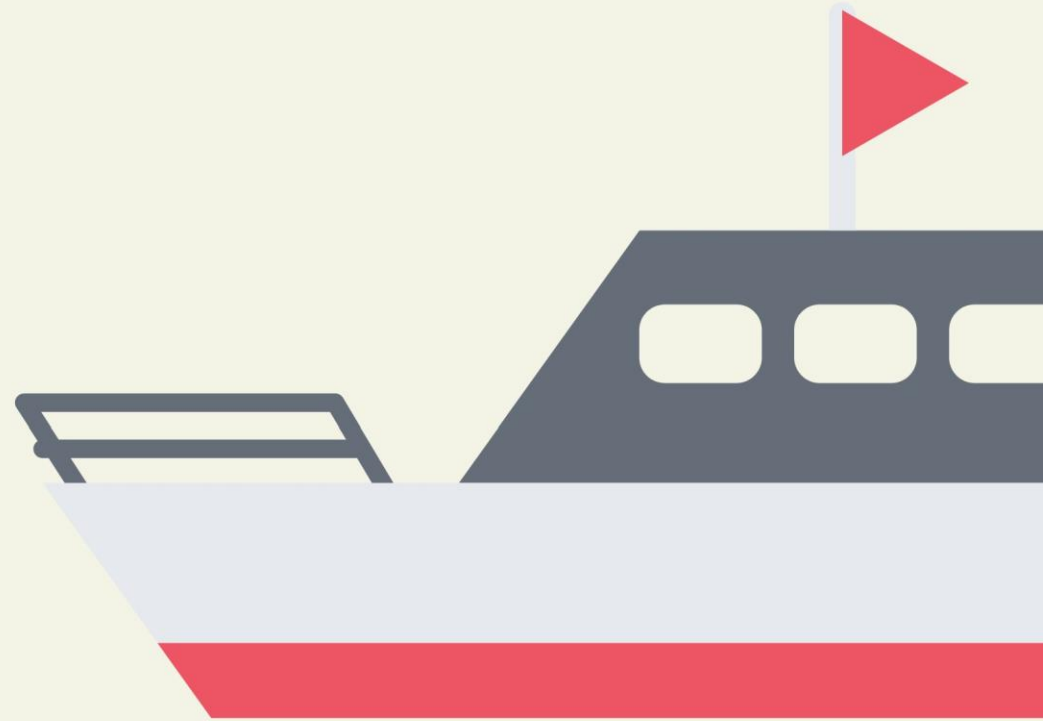
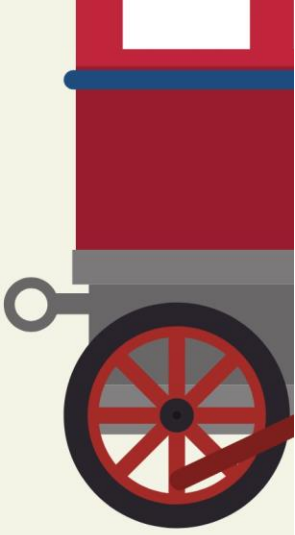
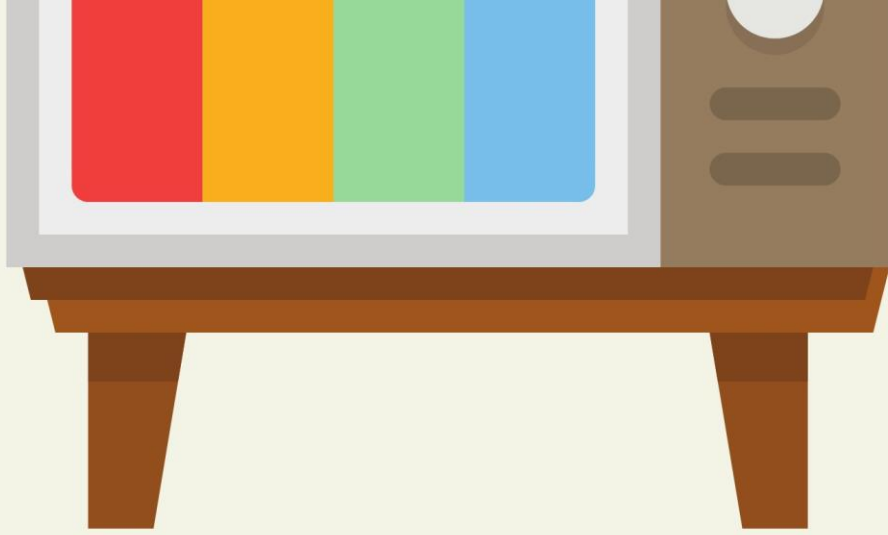


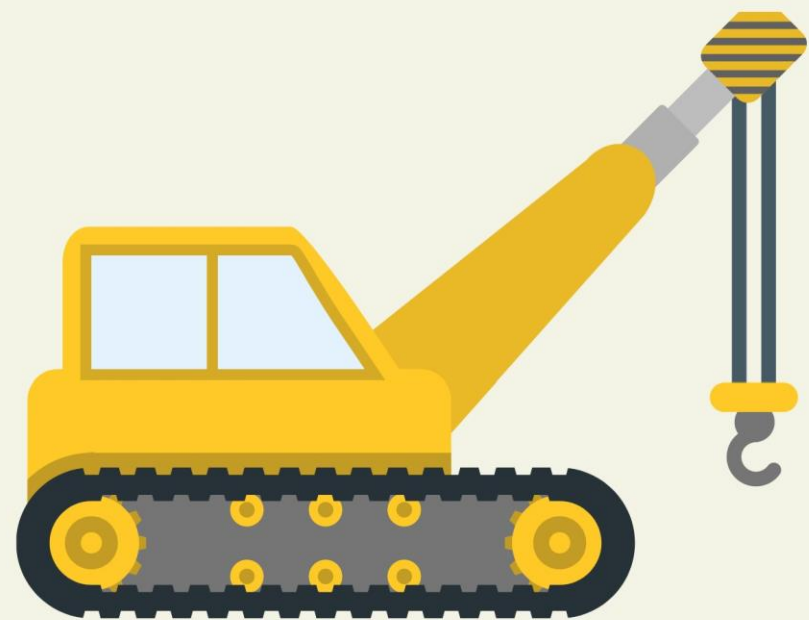
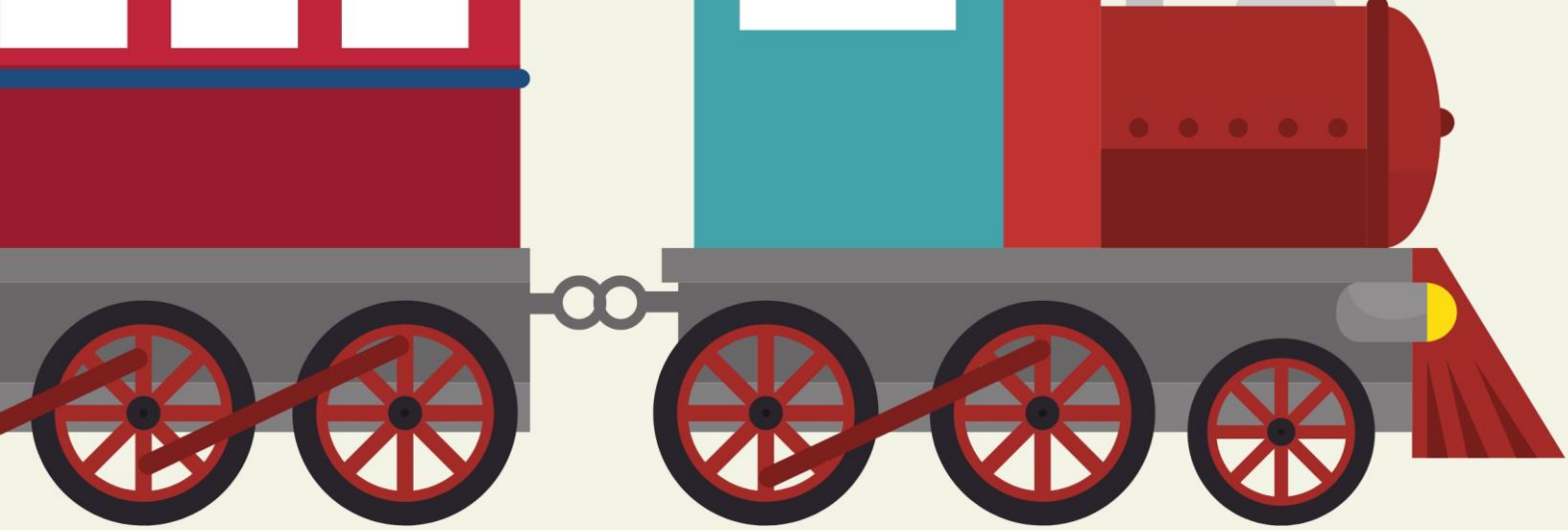


Tokyo









Vertical blue text on the right side of the page, partially cut off.

安全
健康
环境

